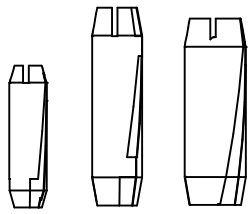


Art.-Nr.

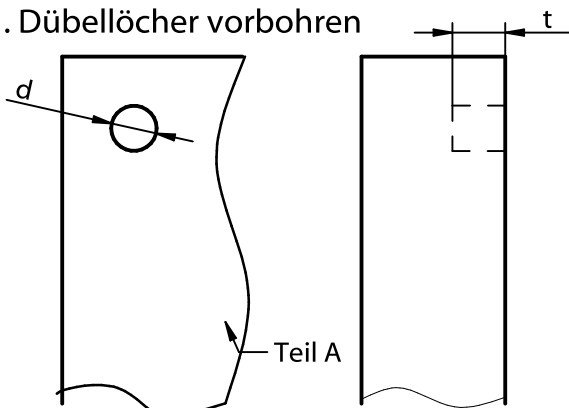


Art.-Nr. Z5052A, Z5053, Z5055

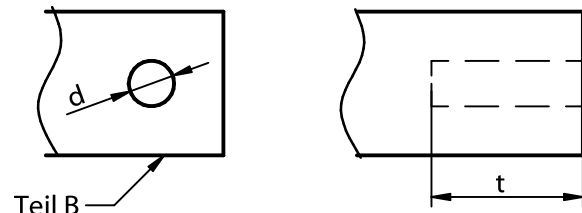
6 mm Art. Nr. Z5052A	8 mm Art. Nr. Z5053	10 mm Art. Nr. Z5055

### Verarbeitung

1. Dübellöcher vorbohren

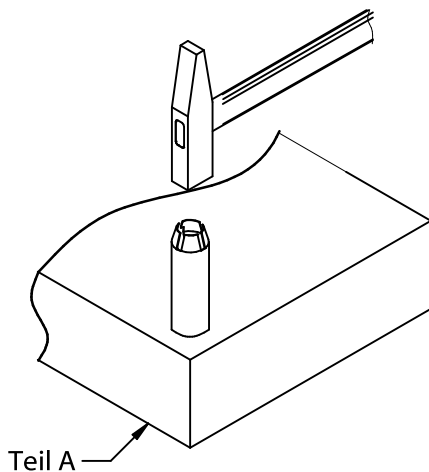


d	t	L
Ø6 mm	7 mm	28 mm
Ø8 mm	13 mm	35 mm
Ø10,5 mm	13 mm	32 mm

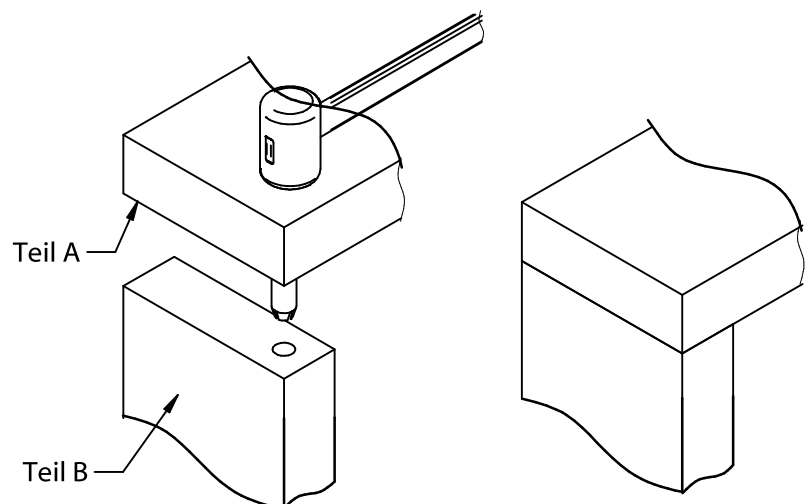


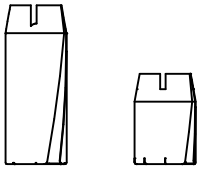
d	t	L
Ø6 mm	20 mm	28 mm
Ø8 mm	23 mm	35 mm
Ø10,5 mm	20 mm	32 mm

2. Einsetzen des Federstahldübels



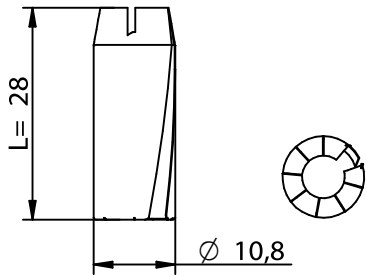
3. Zusammensetzen der Teile



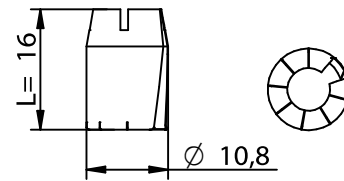


Art.-Nr. Z5055A, Z5055B

10 mm einseitig  
anschraubbar  
Art. Nr. Z5055A

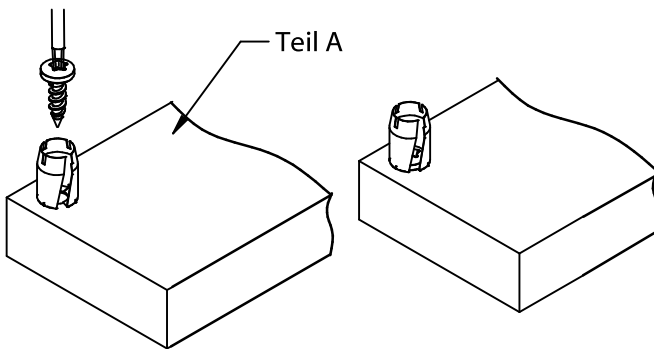


10 mm einseitig  
anschraubbar  
Art. Nr. Z5055B

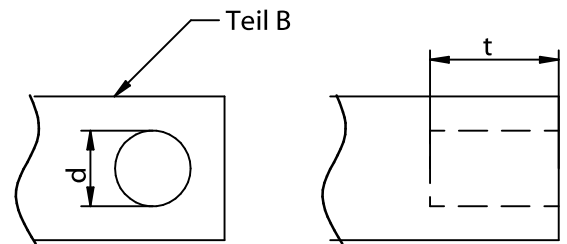


### Verarbeitung

1. Dübel aufschrauben

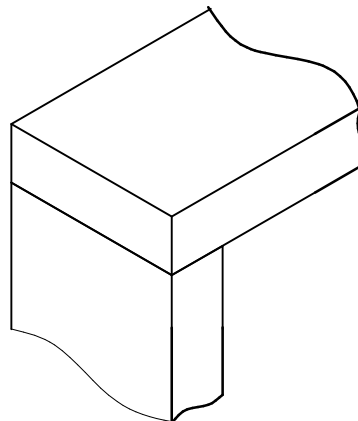
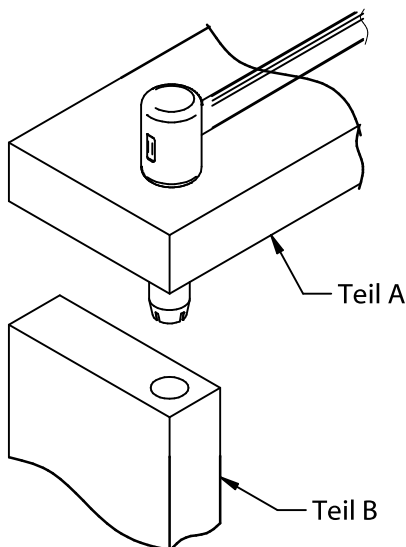


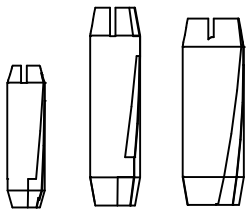
2. Dübellöcher vorbohren



d	t	L
Ø10 mm	18 mm	16 mm
Ø10 mm	30 mm	28 mm

3. Zusammensetzen der Teile





# Assembly instructions

# TUCK

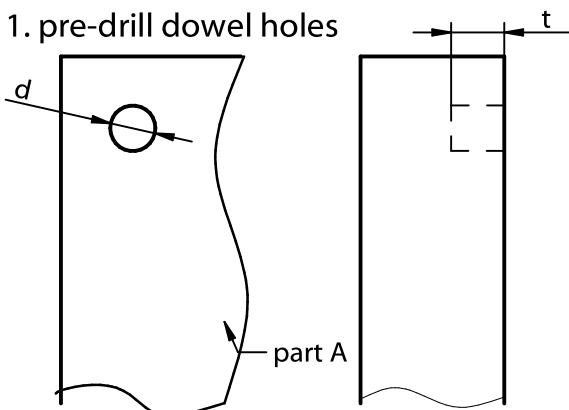
Dowel connector

Art.-No. Z5052A, Z5053, Z5055

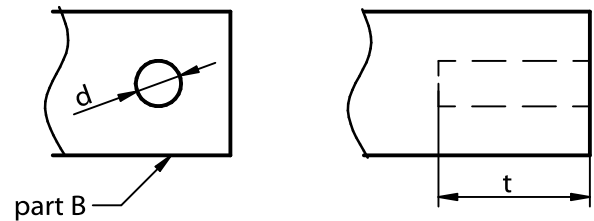
6 mm Art. No. Z5052A	8 mm Art. No. Z5053	10 mm Art. No. Z5055

## Processing

1. pre-drill dowel holes

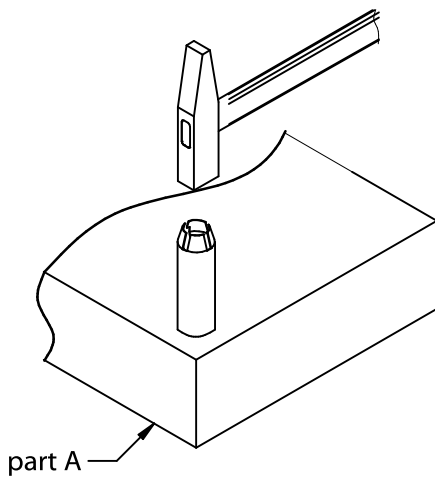


d	t	L
Ø6 mm	7 mm	28 mm
Ø8 mm	13 mm	35 mm
Ø10,5 mm	13 mm	32 mm

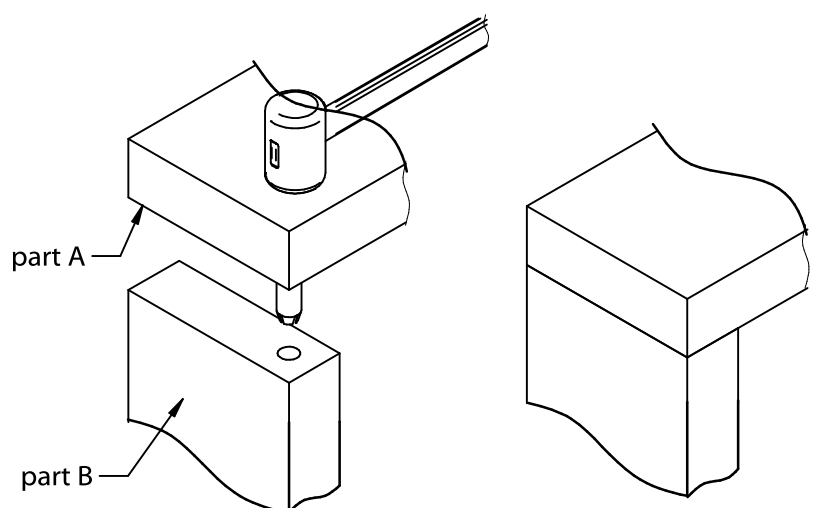


d	t	L
Ø6 mm	20 mm	28 mm
Ø8 mm	23 mm	35 mm
Ø10,5 mm	20 mm	32 mm

2. inserting the spring steel dowel

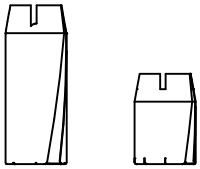


3. assemble the parts



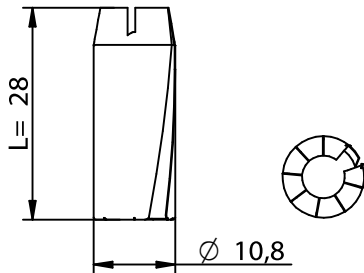
This drawing is the exclusive property of Knapp GmbH.

© Knapp GmbH. All measures in mm - Errors excepted. VERSION 27.01.2025

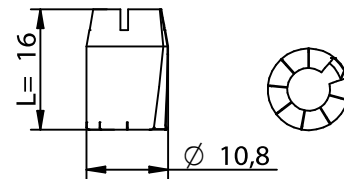


### Art.-No. Z5055A, Z5055B

10 mm dowel to be screwed on at one end  
Art. No. Z5055A

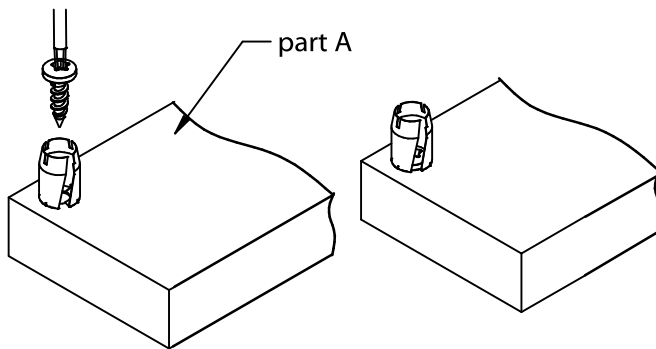


10 mm dowel to be screwed on at one end  
Art. No. Z5055B

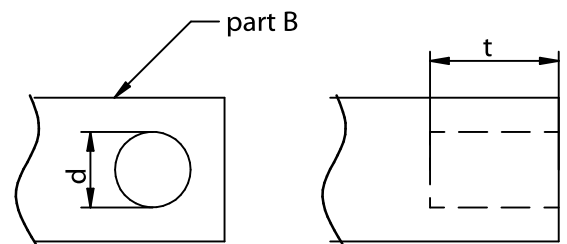


## Processing

1. screw dowel to one side

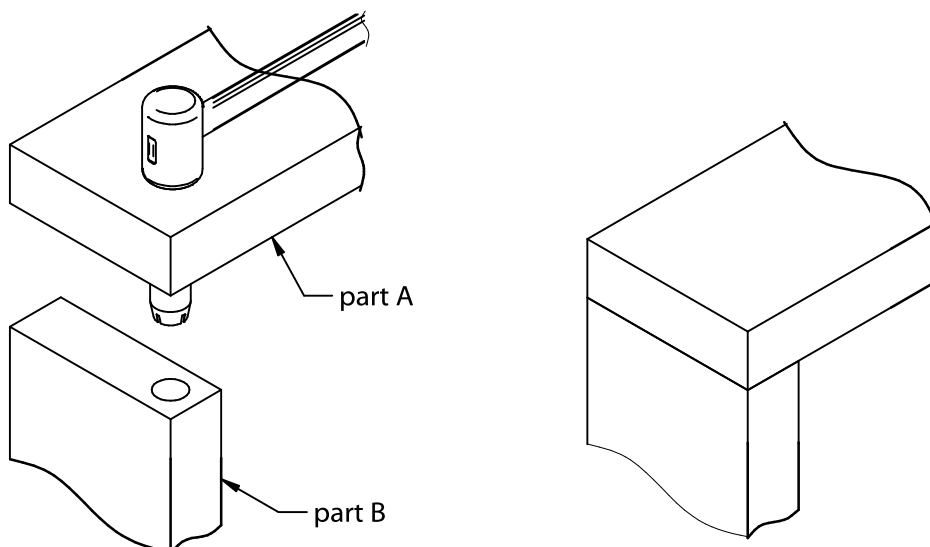


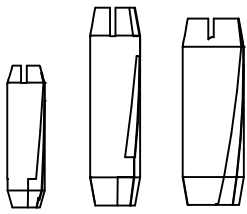
2. pre-drill dowel holes



d	t	L
Ø10 mm	18 mm	16 mm
Ø10 mm	30 mm	28 mm

3. assemble the parts

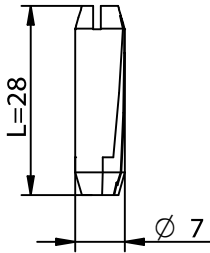




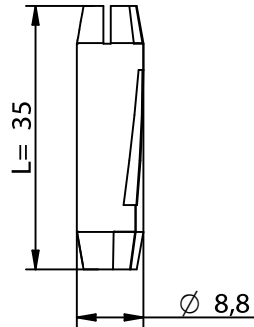
Réf. Z5052A, Z5053, Z5055

Tourillons métalliques à ressort

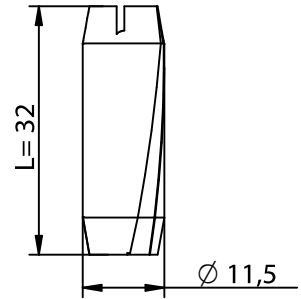
6 mm  
Réf. Z5052A



8 mm  
Réf. Z5053

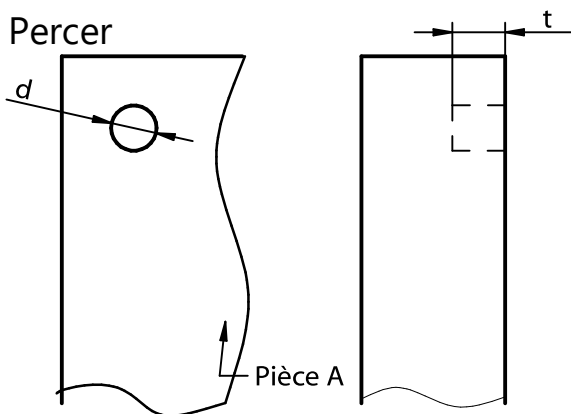


10 mm  
Réf. Z5055

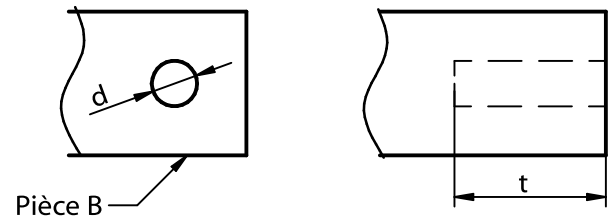


## Mise en oeuvre

### 1. Percer

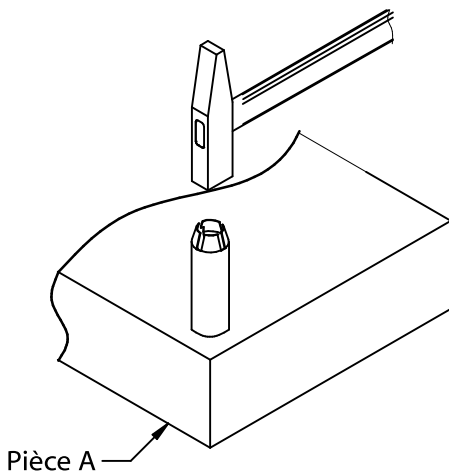


d	t	L
Ø6 mm	7 mm	28 mm
Ø8 mm	13 mm	35 mm
Ø10,5 mm	13 mm	32 mm

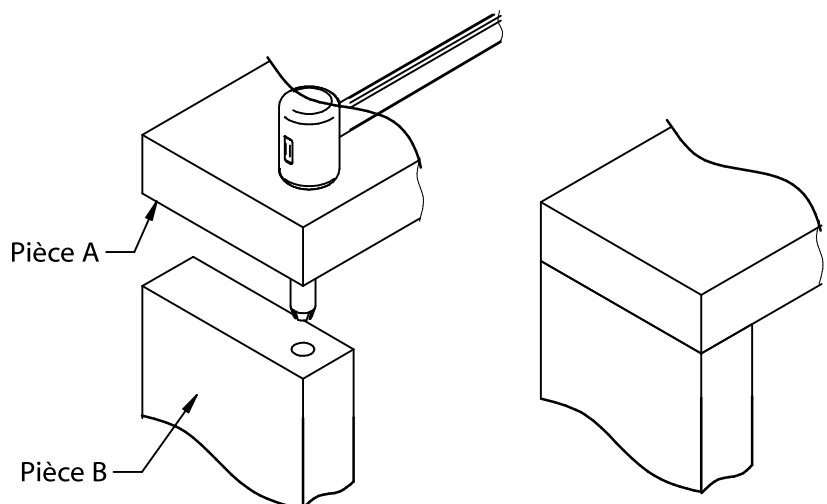


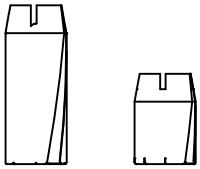
d	t	L
Ø6 mm	20 mm	28 mm
Ø8 mm	23 mm	35 mm
Ø10,5 mm	20 mm	32 mm

### 2. Insérer les tourillons à ressort



### 3. Monter les éléments

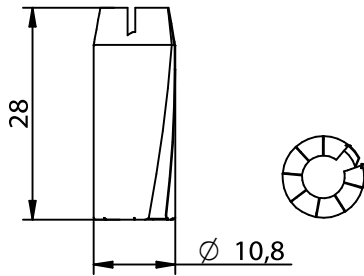




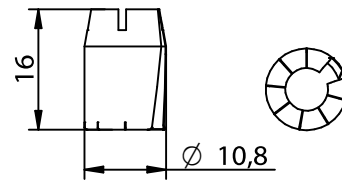
Réf. Z5055A, Z5055B

Tourillons métalliques à ressort

10 mm à visser sur un côté  
Réf. Z5055A

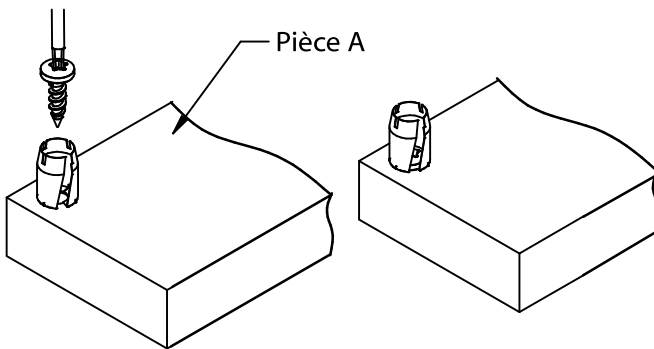


10 mm à visser sur un côté  
Réf. Z5055B

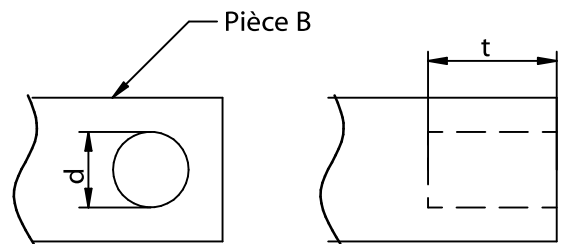


## Mise en oeuvre

### 1. Visser le tourillon

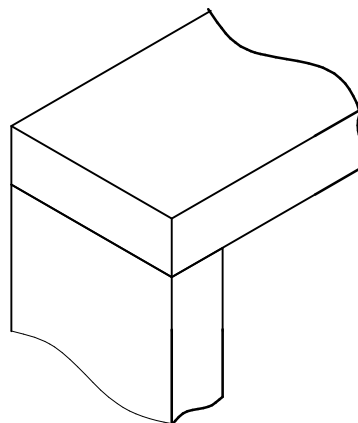
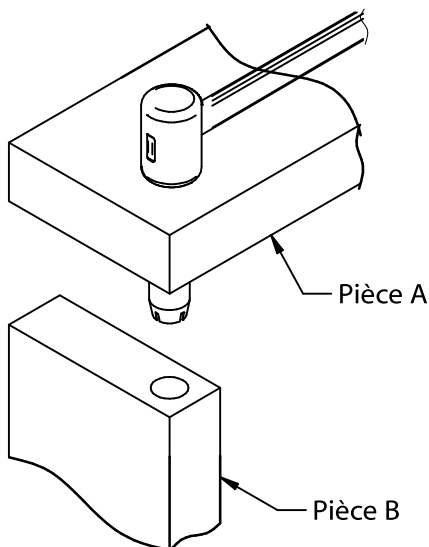


### 2. Percer



d	t	L
Ø10 mm	18 mm	16 mm
Ø10 mm	30 mm	28 mm

### 3. Monter les éléments



**KNAPP®**  
*connectors.com*

Knapp GmbH ■ Wassergasse 31 ■ A-3324 Euratsfeld ■ Tel.: +43 (0)7474 / 799 10 ■ Fax: +43 (0)7474 / 799 10 99  
Knapp GmbH ■ Vertrieb Deutschland ■ Föhrenweg 1 ■ D-85591 Vaterstetten ■ Tel.: +49 (0)8106 / 99 55 99 0 ■ Fax: +49 (0)8106 / 99 55 99 20 ■ E-Mail: info@knapp-verbinder.com  
Knapp GmbH Sàrl ■ Filiale France ■ 1A Rue du Stade ■ F - 67880 Innenheim Tel. : +33 (0)3 88 48 17 87 ■ Fax: +33 (0)9 70 62 81 87 ■ E-Mail : france@knapp-connectors.com