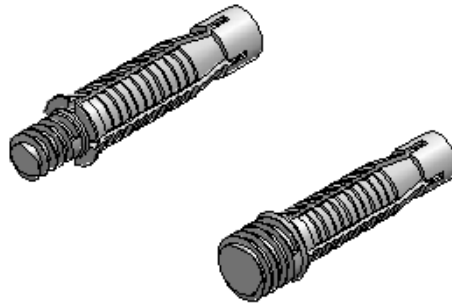


Montageanleitung

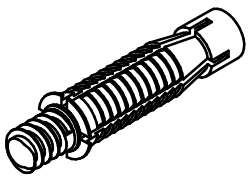
Construction Manual

Notice de montage

VERSION



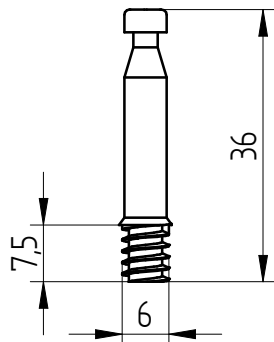
Art.-Nr.



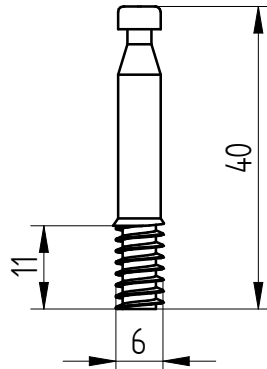
QUICK-SET 5mm mit Torx 10

Korpusverbinder

Bezeichnung:
SCHRAUBBOLZEN

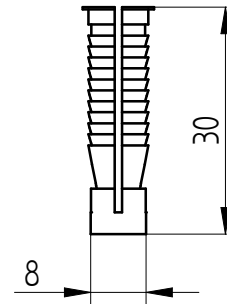


Art.-Nr. Z5058



Art.-Nr. Z5056

KUNSTSTOFFDÜBEL

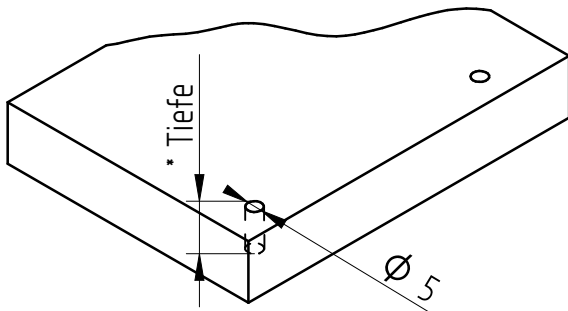


1. Bohren der Schraubbolzen

Durchmesser: 5 mm

* Tiefe: 7,5 mm (Z5058)

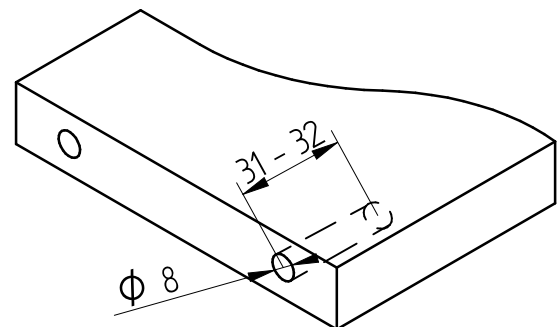
11 mm (Z5056)



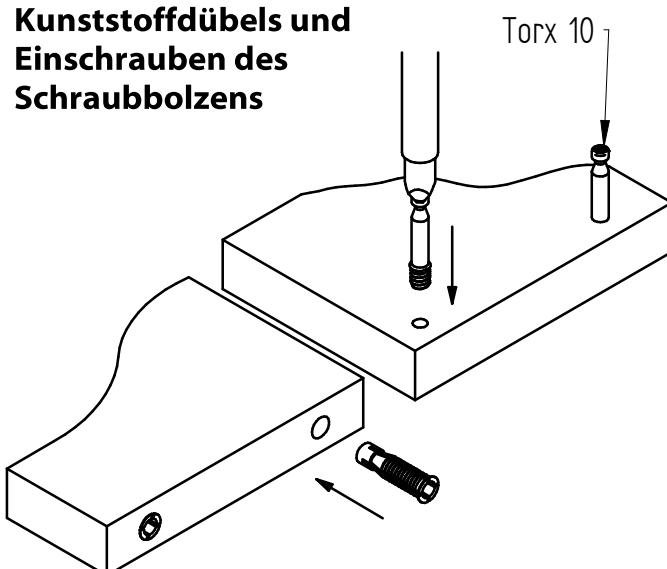
2. Bohren des Kunststoffdübels

Durchmesser: 8 mm

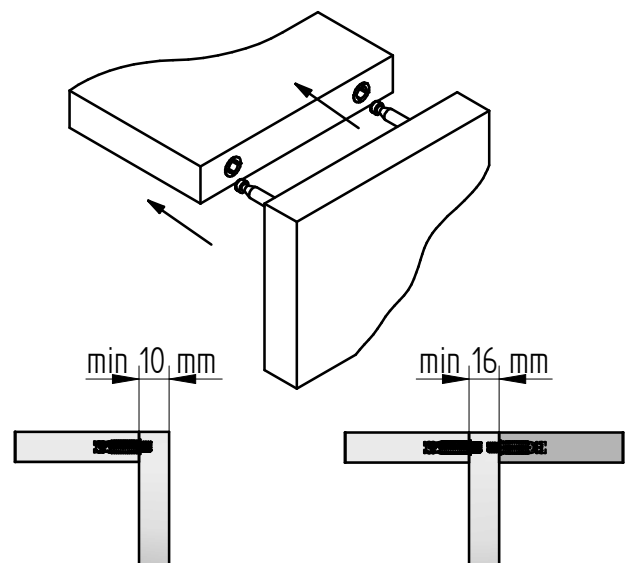
Tiefe: 31-32 mm

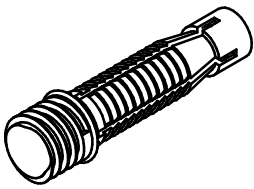


3. Einsetzen des Kunststoffdübels und Einschrauben des Schraubbolzens



4. Zusammensetzen der Teile

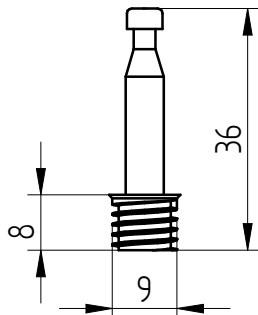




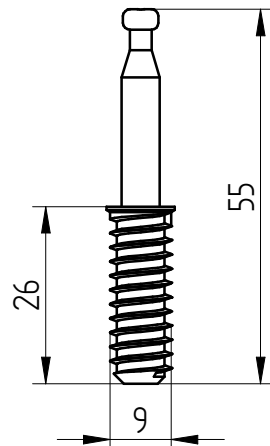
QUICK-SET 8mm mit Torx 10

Korpusverbinder

Bezeichnung:
SCHRAUBBOLZEN

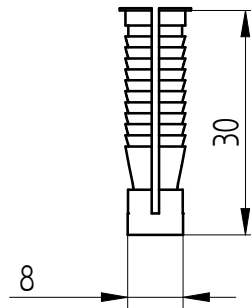


Art.-Nr. Z5057



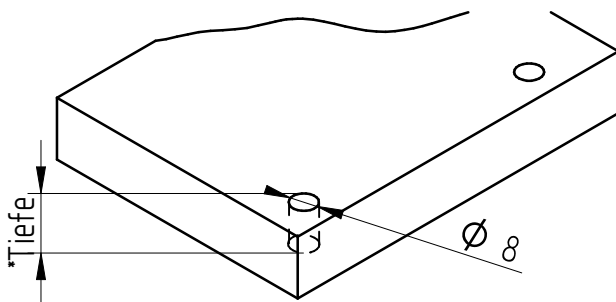
Art.-Nr. Z5059

KUNSTSTOFFDÜBEL



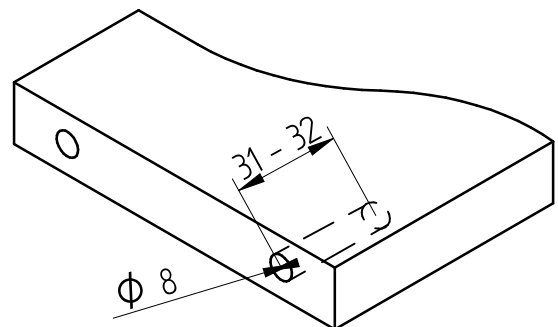
1. Bohren der Schraubbolzen

Durchmesser: 8 mm
*Tiefe: 8 mm (Z5057)
26 mm (Z5059)

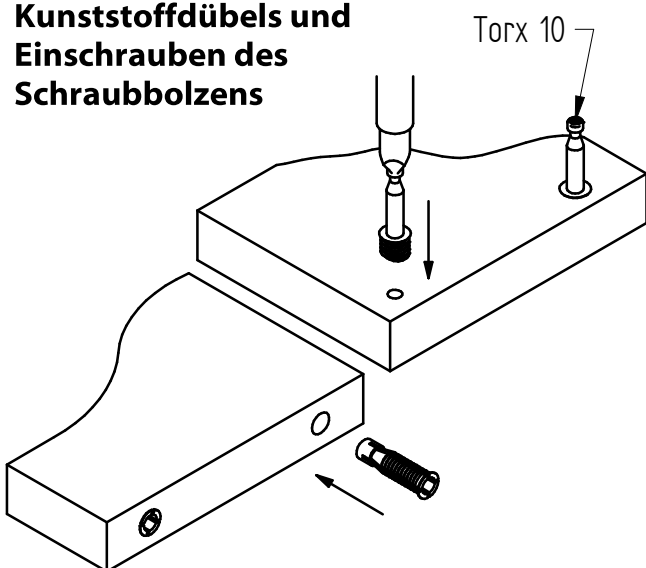


2. Bohren des Kunststoffdübels

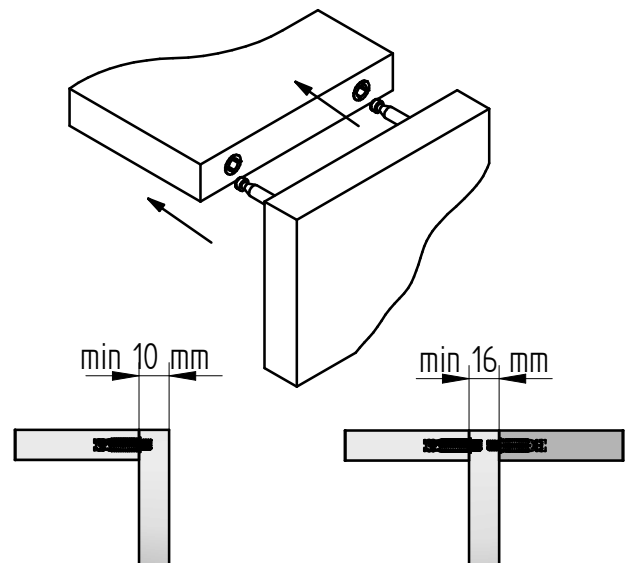
Durchmesser: 8 mm
Tiefe: 31-32 mm

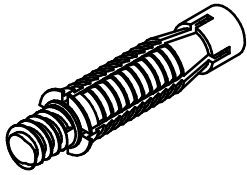


3. Einsetzen des Kunststoffdübels und Einschrauben des Schraubbolzens



4. Zusammensetzen der Teile



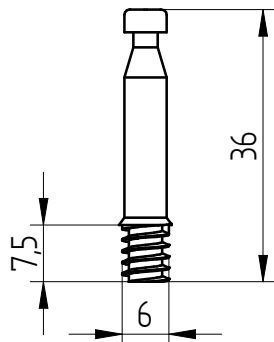


QUICK-SET 5mm with Torx 10

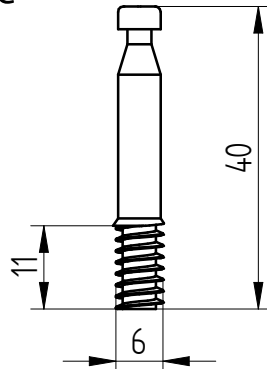
Cabinet connector

Title:

Anchorbolt for drillhole

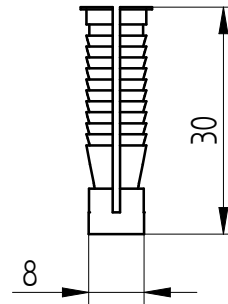


Art.-No. Z5058



Art.-No. Z5056

Plastic dowel for drillhole

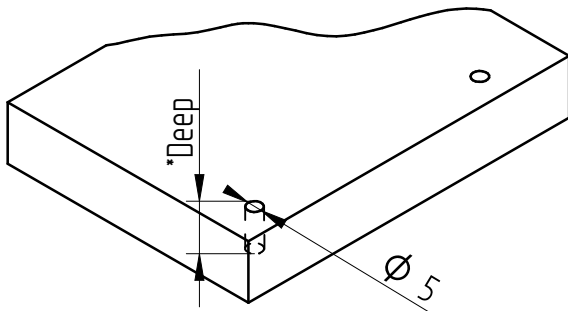


1. Drilling for anchorbolt

Diameter: 5 mm

*Deep: 7,5 mm (Z5058)

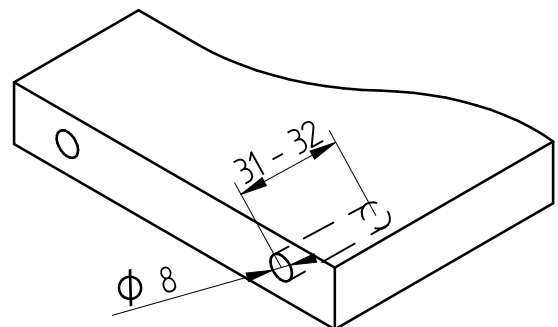
11 mm (Z5056)



2. Drilling for plastic dowel

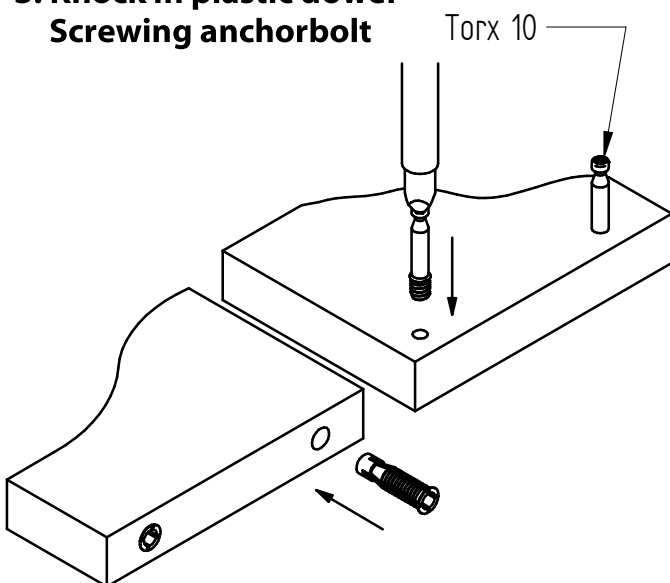
Diameter: 8 mm

Deep: 31-32 mm

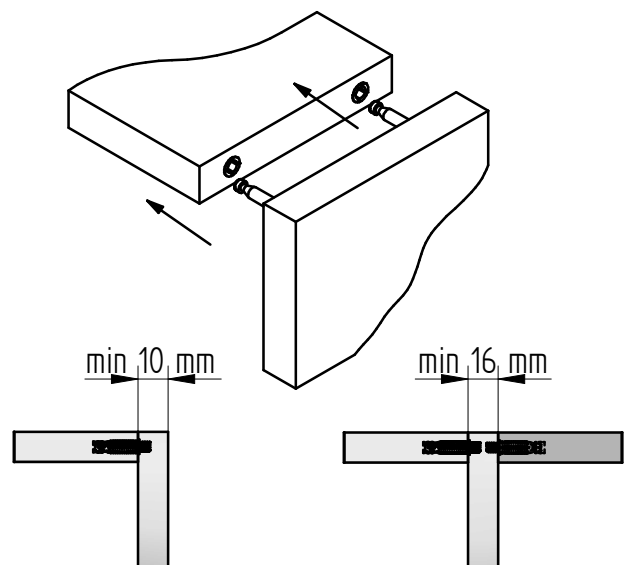


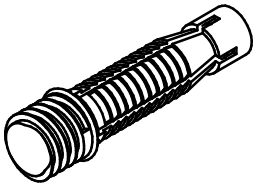
3. Knock in plastic dowel

Screwing anchorbolt



4. Assemble



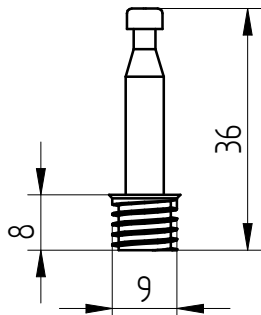


QUICK-SET 8mm with Torx 10

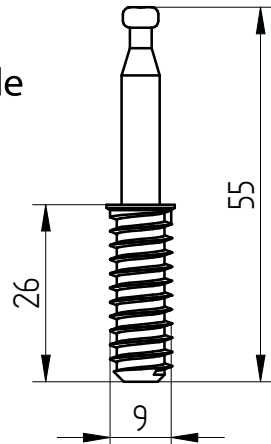
Cabinet connector

Title:

Anchorbolt for drillhole

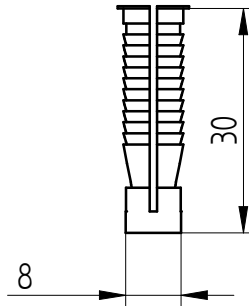


Art.-No. Z5057



Art.-No. Z5059

Plastic dowel for drillhole

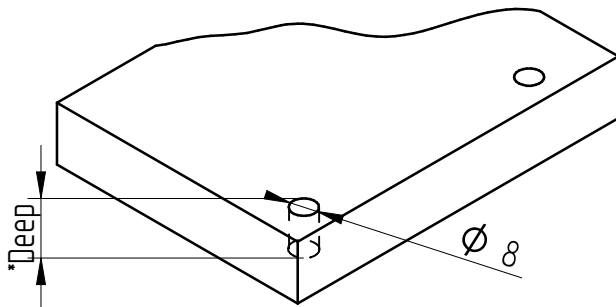


1. Drilling for anchorbolt

Diameter: 8mm

*Deep: 8 mm(Z5057)

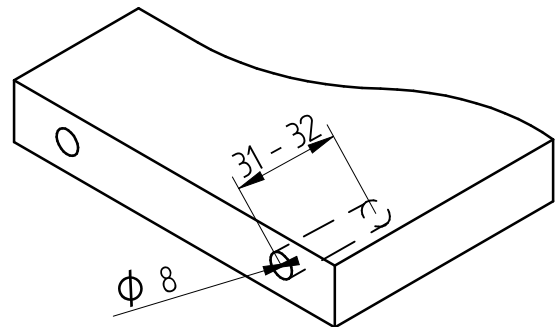
26 mm(Z5059)



2. Drilling for plastic dowel

Diameter: 8mm

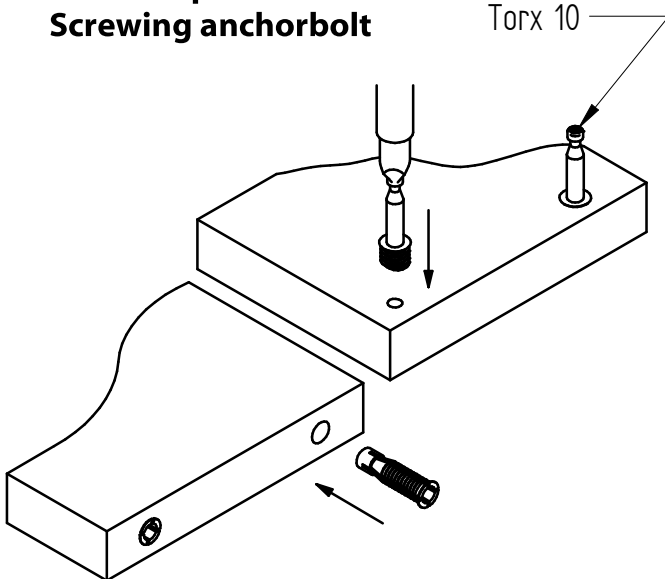
Deep: 31-32 mm



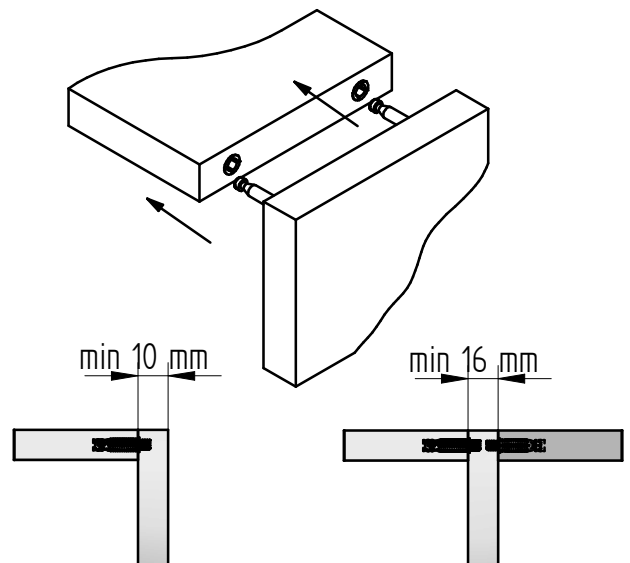
3. Knock in plastic dowel

Screwing anchorbolt

Torx 10

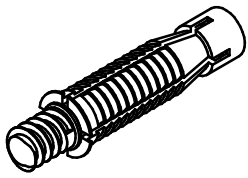


4. Assemble



This drawing is the exclusive property of Knapp GmbH.

© Knapp GmbH. All measures in mm - Errors excepted. VERSION 07 20. 11.2024

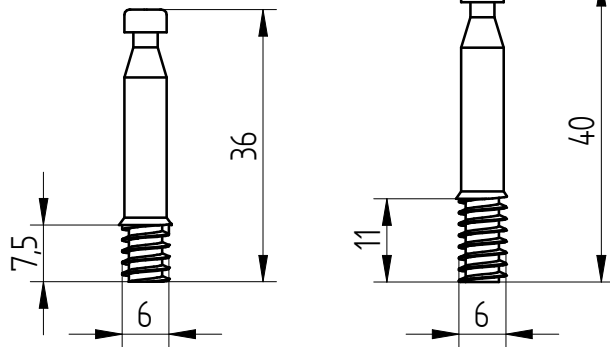


QUICK-SET 5 mm - Torx 10

Assembleur pour caisson

Description

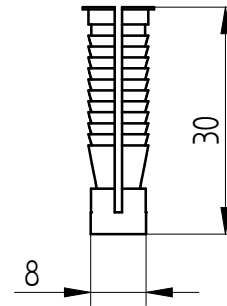
GOUJON ACIER A VISSER



Réf. Z5058

Réf. Z5056

CHEVILLE PLASTIQUE

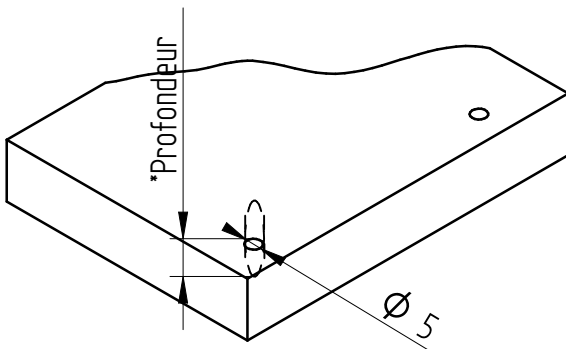


1. Perçage du goujon

Diamètre : 5 mm

*Profondeur : 7,5 mm (Z5058)

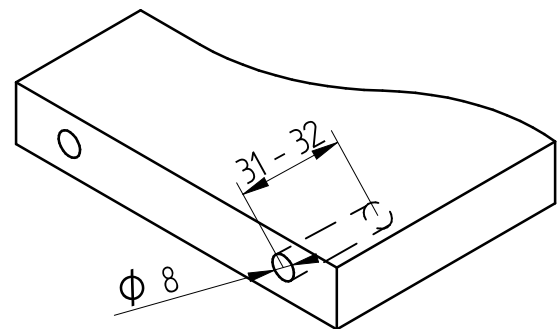
11 mm (Z5056)



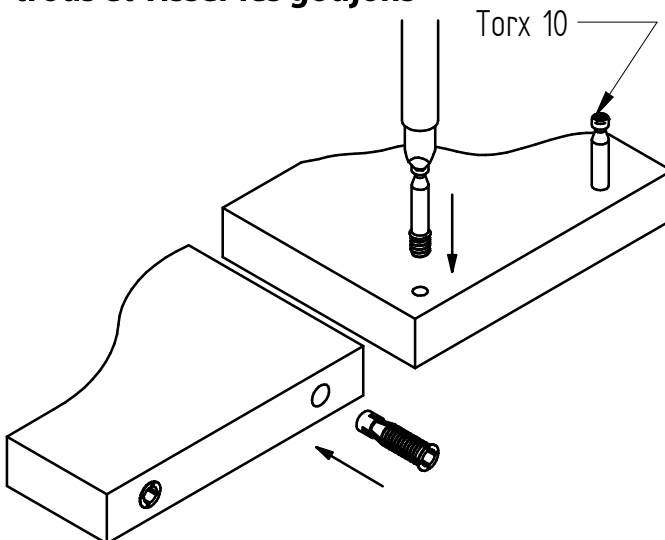
2. Perçage de la cheville

Diamètre : 8 mm

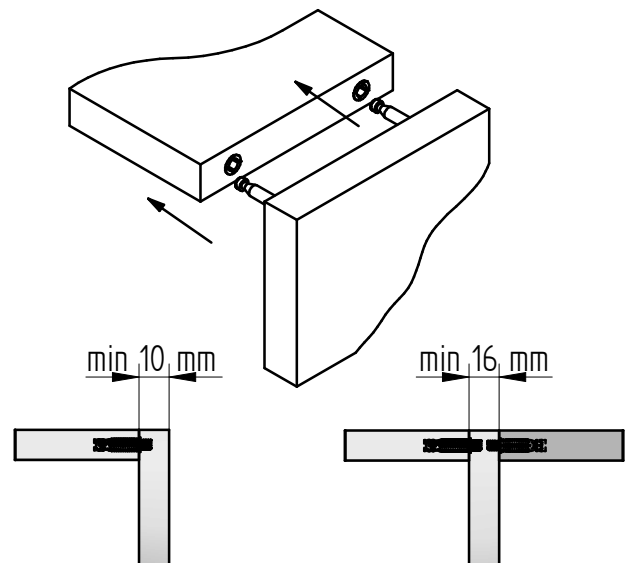
Profondeur : 31-32 mm

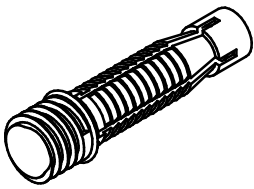


3. Placer les chevilles dans les trous et visser les goujons



4. Assembler les pièces



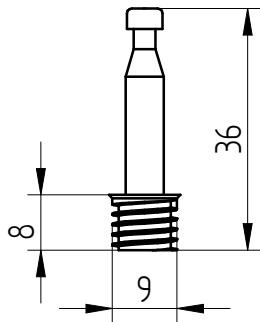


QUICK-SET 8 mm - Torx 10

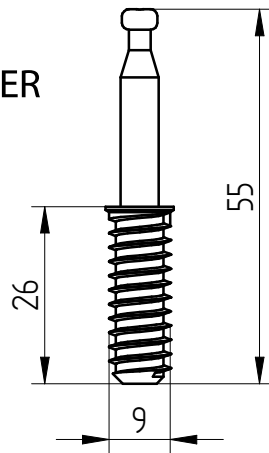
Assembleur pour caisson

Description

GOUJON ACIER A VISSER

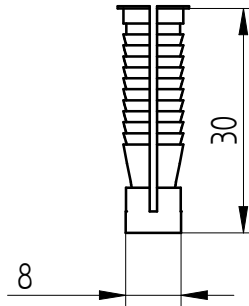


Réf. Z5057



Réf. Z5059

CHEVILLE PLASTIQUE

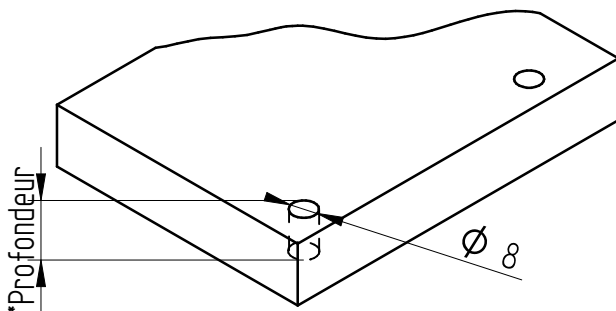


1. Perçage du goujon

Diamètre : 8 mm

*Profondeur : 8 mm (Z5057)

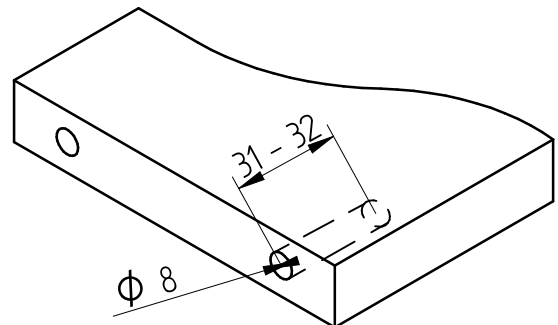
26 mm (Z5059)



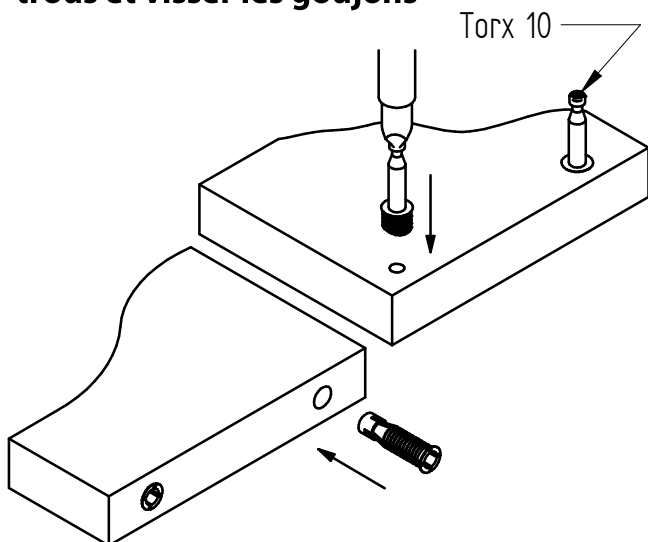
2. Perçage de la cheville

Diamètre : 8 mm

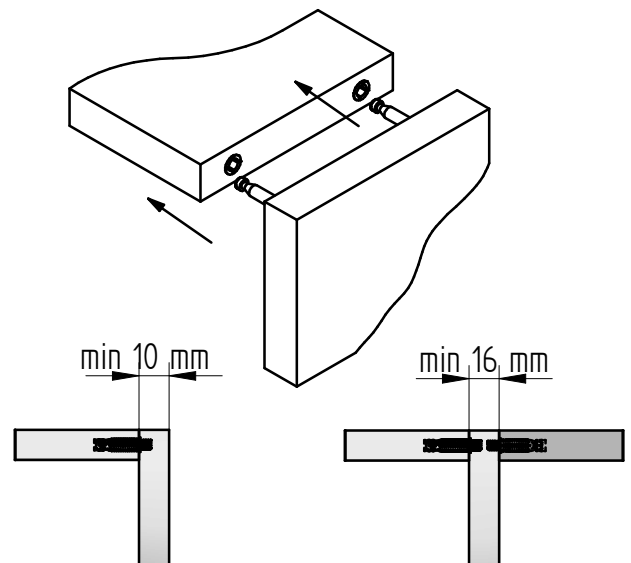
Profondeur : 31-32 mm



3. Placer les chevilles dans les trous et visser les goujons



4. Assembler les pièces



KNAPP[®]
connectors.com

Knapp GmbH ■ Wassergasse 31 ■ A-3324 Euratsfeld ■ Tel.: +43 (0)7474 / 799 10 ■ Fax: +43 (0)7474 / 799 10 99
Knapp GmbH ■ Vertrieb Deutschland ■ Föhrenweg 1 ■ D-85591 Vaterstetten ■ Tel.: +49 (0)8106 / 99 55 99 0 ■ Fax: +49 (0)8106 / 99 55 99 20 ■ E-Mail: info@knapp-verbinder.com
Knapp GmbH ■ Distribution France et pays francophones ■ 20 Rue des Fleurs ■ F - 67880 Innenheim Tel. : +33 (0)3 88 48 17 87
E-Mail : france@knapp-connectors.com